

Be Confident with Sustained Accuracy Over Time

Neptune® MACH 10® Ultrasonic Meter



The MACH 10® ultrasonic water meter features solid state metrology with no degradation of accuracy over time. Combined with a corrosion-resistant, lead free, high-copper alloy maincase, the MACH 10 is built to withstand demanding service conditions and deliver sustained accuracy over the life of the meter.

- Sizes 1½" and 2"
- Extended low-flow range for superior leak detection
- Accuracy sustained over meter life
- Can be installed in both horizontal and vertical applications
- Advanced ultrasonic technology
- Lead free, high-copper alloy maincase
- Certified to UL 327B (1½", 2") for residential fire service applications
- No maintenance

Specifications

AWWA C715 Compliant

NSF/ANSI 61 Certified

UL 327B Certified

(Optional for 1½", 2")

Application

- Cold water measurement of flow in potable, combination potable and fire service, and reclaim/secondary water applications.

Maximum Operating Water Pressure

- 175 psi

Operating Water Temperature Range

- +33°F to +122°F (+0.5°C to +50°C)

Environmental Conditions

- Operating temperature:
+14°F to +149°F (-10°C to +65°C)
- Storage temperature:
-40°F to +158°F (-40°C to +70°C)

Options

Sizes

- 1½"
- 2"

Meter Options

- Potable water
- Reclaim water
- Residential fire service (combo or standalone meter service lines)

Warranty

- Neptune provides a limited warranty for performance, materials, and workmanship. See warranty statement for details.

System Compatibility

- Compatible with all Neptune endpoints. Also available as MACH 10®)R900i™ for an integrated radio solution and MACH 10®)TC for Sensus Touch Coupler compatibility.

Operating Characteristics

| Meter Size | Normal Operating Range @ 100% Accuracy (+/- 1.5%) | AWWA C715 Standard Type 1 | Extended Low Flow @ 100% Accuracy (+/- 3.0%) |
|------------|---|---------------------------|--|
| 1½" | 0.80 to 125 U.S. gpm | 2.0 to 100 U.S. gpm | 0.30 U.S. gpm |
| 2" | 1.50 to 160 U.S. gpm | 2.5 to 160 U.S. gpm | 0.50 U.S. gpm |

Dimensions

| Meter Size | Length | Height | Flanges |
|------------|--------|--------|-----------------|
| 1½" | 10" | 6¼" | Oval |
| | 13" | 6¼" | Oval |
| | 12⅝" | 6¼" | Internal Thread |
| | 12⅝" | 6¼" | External Thread |
| 2" | 10" | 6½" | Oval |
| | 15¼" | 6½" | Oval |
| | 17" | 6½" | Oval |
| | 15¼" | 6½" | Internal Thread |
| | 15¼" | 6½" | External Thread |

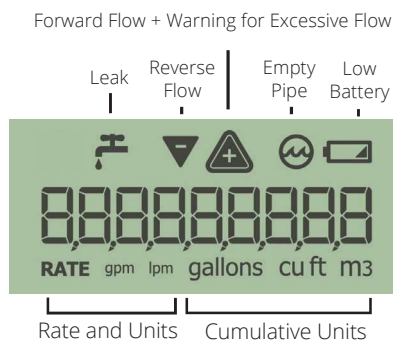
Available Units of Measure

| Consumption | Rate |
|------------------------------|------|
| Gallons | GPM |
| Cubic Feet | GPM |
| Cubic Metres | LPM |
| Cubic Meters (International) | LPM |
| Imperial Gallons | GPM |
| Acre-Feet* | GPM |
| Litres* | LPM |
| Kilolitres* | LPM |

*Unit cannot be displayed on LCD

LCD Display

9-digit display for extra resolution on manual reads.

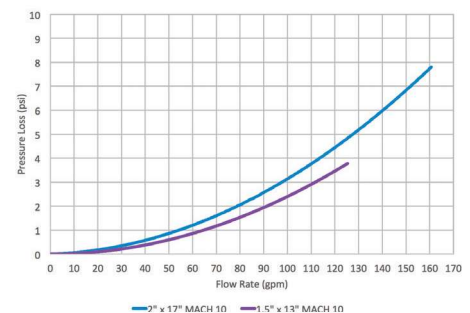


Registration

| High Resolution (8-digit reading) | | 1½" | 2" |
|-----------------------------------|------------------|-----|----|
| 1 | U.S. Gallons | ✓ | ✓ |
| 1 | Imperial Gallons | ✓ | ✓ |
| 0.1 | Cubic Feet | ✓ | ✓ |
| 0.01 | Cubic Metres | ✓ | ✓ |

Pressure Loss

Typical meter performance. Individual results may vary.



neptunetg.com

Neptune Technology Group
1600 Alabama Highway 229
Talladega, AL 36078
800-633-8754 f 334-283-7293